

POPULAR *massive*

with general building inspectorate approval



**TESTED &
APPROVED**

POPULAR *massive*
with general building
inspectorate approval

MADE in GERMANY

POPULAR *massive*

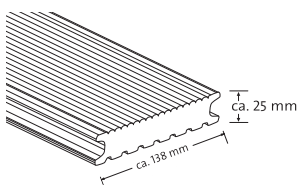
with general building inspectorate approval



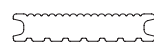
The **POPULAR *massive*** is, as the name says, a massive deck that has provided a relaxed, leisurely atmosphere on numerous patios and balconies for many years. The fact that it can now also be used as a regulated building product following approval will certainly increase its popularity even more.

As a specialist for wood composite systems "Made in Germany", we have received general building inspectorate approval (no. Z-10.9-484) for our **POPULAR *massive*** patio deck. The German Institute for Construction Technology in Berlin (Deutsches Institut für Bautechnik - DIBt) has granted approval for the first time to a wood composite material (also called WPC) without the approval referring to a connected covering. We are very pleased with the approval from the DIBt because this means that our patio deck can be laid as a load-bearing floor in outdoor areas without any restrictions – even in public buildings. For our customers, this means a great deal of planning security, and it expands the application areas to balconies, roof terraces, loggias, stairs, and stair landings without any extra measures to protect against falling through. For us, it is also proof of our excellent product quality.

DIE BELIEBTE *massiv*



TERRASSENDIELE UND ZUBEHÖR



Patio deck in Brown, Grey und Anthracite
height ca. 25 mm and width ca. 138 mm
Weight: 3,6 kg/m

Surface finely or widely striated and brushed for more grip and slip resistance (high slip resistance levels of R12 and R13 according to TÜV Rheinland.)

Standard lengths are 4m and 6m
Special lengths from ca. 2 m – 13 m at extra charge. Requirements: 1 square metre consists of ca. 7 metres of patio decks



Joint profile tube - level Ø ca. 18,5 mm
For optical and level sealing between the decks, available on a roll



Insertion aid, Joint tube NEU
for efficient and even mounting of the joint profile tube



Specific patio construction drill
to pre-drill the specific screw

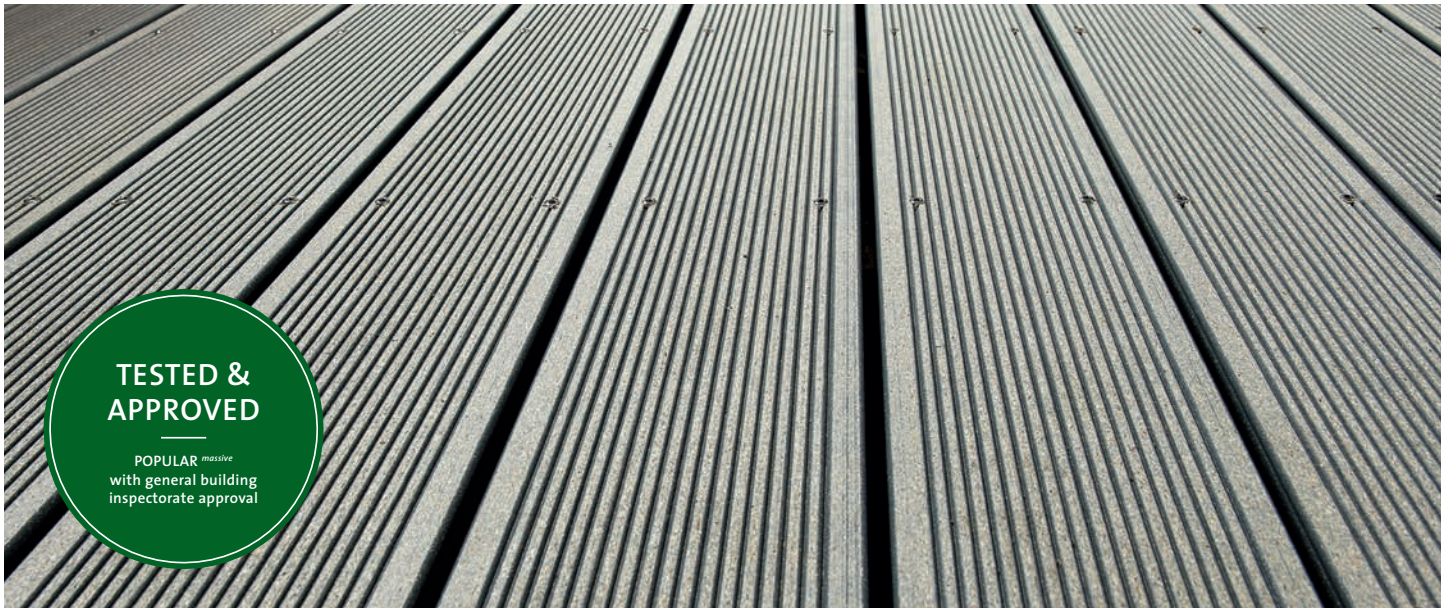


Specific screw Stainless steel, hardened or V4A
for fastening the patio decks

Installation tips can be found at www.naturinform.com

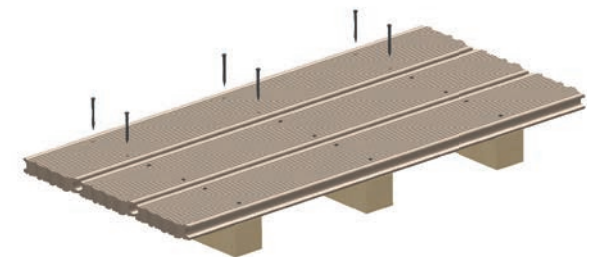
LAYING

Laying in compliance with the approval

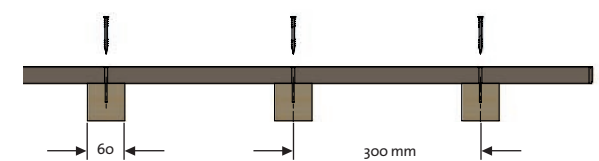


According to the general building inspectorate approval with the number Z-10.9-484, the **POPULAR massive** patio deck can be used as a load-bearing floor for roof terraces, arcades, loggias, balconies, exit platforms, and similar as well as for stairs and stair landings in residential and office buildings in accordance with the standard DIN EN 1991-1-1/NA1, table 6.1DE, category Z, T1 and T2. They are laid as multi-span beams (at least two-span beams) and installed so that they are visible and replaceable at all times. The installation must be done according to the specifications in the approval. The decks must be screwed together with the underlying wooden construction. The minimum support width and the minimum number of screws must also be observed according to the information of the DIBt.

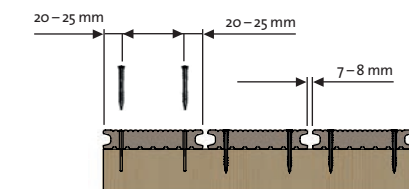
The **POPULAR massive** patio deck must be fastened to an underlying wooden construction using screws. The decks must be pre-drilled with a drill $D = 5^{\pm 0.5}$ mm. A counter bore must be created with a corresponding countersinking cutter. The substructure may be pre-drilled with $D \leq 3$ mm. The minimum support width of the end and intermediate supports as well as the minimum number of screws per support must be correspondingly observed. The laying instructions from the German Institute for Construction Technology and the certificate of general building inspectorate approval must be observed. The load-bearing underlying wooden construction is not covered by the general building inspectorate approval.



screw connection



centre distance



joint width

CERTIFICATE

The certificate must be made available to the applicant, the executing company and all entrusted individuals. The certificate and further information on the new **POPULAR massive** can be found online under „Service“ at www.naturinform.com

We create your favourite spots!



MADE in GERMANY

This printed paper was carefully put together for you and is constantly being developed further.
Current and valid versions are at www.naturinform.com. Printed colours may vary. State: November 2017.

NATUR inFORM[®]
natürlich ■ wetterfest ■ formstabil

NATURinFORM GmbH
Flurstraße 7
D-96257 Redwitz a. d. Rodach
Tel +49 (0) 9574 65473-0
Fax +49 (0) 9574 65473-20
info@naturinform.com
www.naturinform.com

